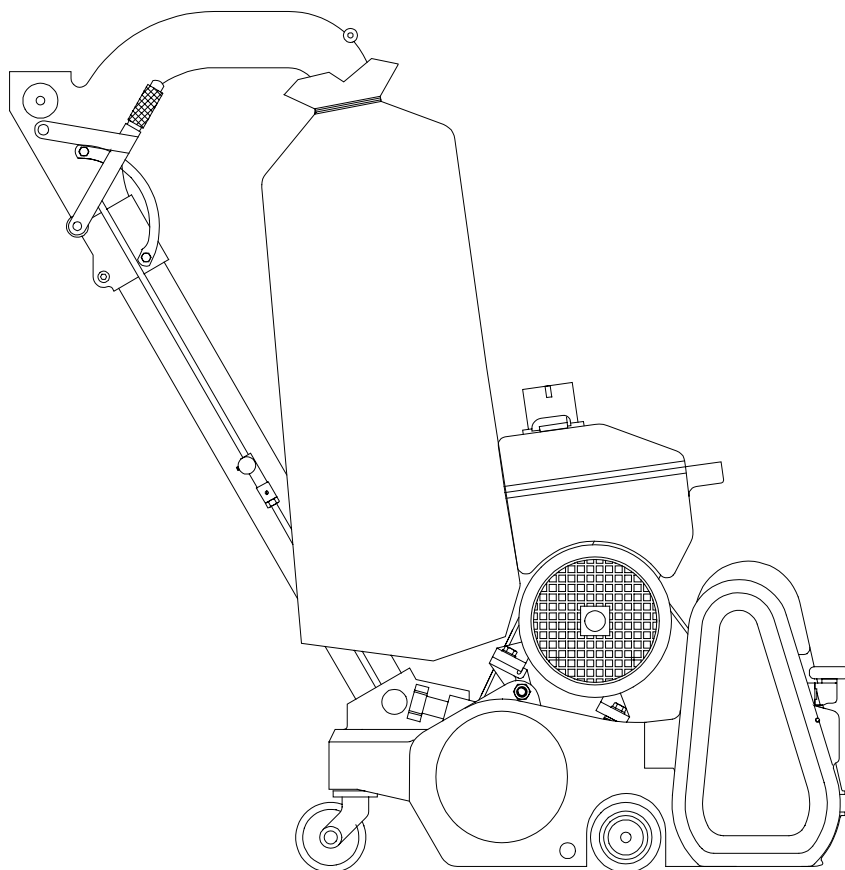


Leopard

USE AND MAINTENANCE MANUAL FOR THE LEOPARD MACHINE

This manual contains important information for safe use and operation of this machine. Failure to read this manual before starting up, adjusting or carrying out maintenance operations on this machine may cause damage to persons and/or things. The operator must be trained to use the machine before starting it up. Keep this manual for future reference. For new manuals, apply to:



**Janser GmbH - Maschinen- und
Gerätebau**

Böblinger Straße 91 - D-71139 Ehningen

Tel. 07034 / 127-0 - Telefax 07034 / 8838

[http:// www.janser.com](http://www.janser.com) Email: info@janser.com



INDEX

Instructions for operator safety 4

Machine safety characteristics 6

Introduction and machine characteristics..... 7

Instructions for electrical connection 7

Figures 8-9

Carrying the machine
 one person 10
 two people 10

Setting the machine up 11

Machine operation..... 12

Adjustment procedure
 centring the 13
 sanding pressure..... 13
 wheels. 13

Routine maintenance
 sanding chamber..... 14
 rollers 14
 wheels 14
 dust bag 14
 belts..... 14
 bearings 14

Spare parts..... 14

Problems/Causes/Remedies 15

Compliance declaration..... 16

INSTRUCTIONS FOR OPERATOR SAFETY

DANGER:	means	The operator or other person may be seriously injured or die if the DANGER warnings found on this machine or in this manual are ignored or not kept to. Read and comply with all the DANGER warnings found on this machine or in this manual.
WARNING:	means	The operator or other persons may be injured if the WARNINGS found on this machine or in this manual are ignored or not kept to. Read and comply with all the WARNINGS found on this machine or in this manual.
CAUTION:	means	The operator or other persons may be hurt if the CAUTION warnings found on this machine or in this manual are ignored or not kept to. Read and comply with all the CAUTION warnings found on this machine or in this manual.

DANGER: Failure to read the LEOPARD machine manual before starting up, adjusting or carrying out maintenance operations on the machine itself may cause injury to persons and/or damage to things. The operator must be trained to use the machine before starting it up.

DANGER Sanding wooden floors may lead to an explosive environment. The following safety procedures must be applied:

- Cigarettes, cigars, pipes, lighters, pilot lights and all other sources of fire may cause explosion if they are used while sanding. Sources of fire must be completely removed from the work area.
- Poorly ventilated work areas may lead to an explosive environment when certain combustible materials are present in the air, such as, for example, solvents, thinners, alcohols, fuels, some paints, sawdust and other combustible materials. Machines for sanding floors can cause combustible materials and vapours to ignite.
- Working with the dust created by sanding may lead to spontaneous combustion or explosions. Dust from sanding may catch fire and cause injury or damage. Dust from sanding must be dealt with suitably. Always empty the sanding dust into metal containers located outside the building.
- Empty the dust bag when it is one-third full. Empty the dust bag each time after finishing with the machine. Never leave the dust bag unattended when it contains sanding dust.
- Do not empty the contents of the bag over a fire.
- Knocking against nails while sanding may cause explosion or start a fire. Always sink all nails completely before sanding the surfaces.

- DANGER:** Use of the machine before it is completely assembled may cause injuries to people and/or damage to things. Do not use a machine which is not completely assembled. Keep all fastenings closed. Adjust the machine according to the specifications.
- DANGER:** If the power supply circuit trips continuously or it provides insufficient power, there is a risk of electrocution. Have an authorized electrician check the fuses, protection circuit and power supply line.
- DANGER:** Maintenance or repairs carried out on a machine which is not duly disconnected from the power supply line may cause electrocution. Disconnect the power line before carrying out any maintenance work and/or repairs.
- DANGER:** Use of this machine connected to a grid without earth may cause electrocution. Never disconnect or disable the power supply earth conductor. Consult an electrician if the earth conductor is missing or if you suspect that the system is not suitably earthed.
- DANGER:** Use of this machine with a damaged power supply cable may cause electric shock. Do not use the machine if the power supply cable is damaged. Do not use the power supply cable for moving the machine.
- DANGER:** Injury or electrocution may occur if the machine passes over the power supply cable or damages it. Keep the cable away from the lower part of the machine in order to avoid contact with the abrasive. Keep the power supply cable up over the machine.
- DANGER:** The moving parts of this machine may cause serious injury and/or damage. Keep hands, feet and loose clothing away from the moving parts of the sander.
- DANGER:** Injury or damage may be caused by using the sander without its guards and covers in place. Always make sure that all guards and covers are in their places and well attached.
- DANGER:** Carrying out maintenance operations, replacing or adjusting belts, or replacing the dust bag may cause injury to the operator and/or surrounding people if the machine is connected to the power supply.
- WARNING:** Serious injury or damage may occur if all the instructions on this machine or in this manual are not read and complied with. Read and abide by all safety instructions. Make sure that all the plates, transfer printings, warnings, cautions and instructions are fixed to the machine. New plates may be had from your authorized JANSER retailer.
- WARNING:** Clouds of sanding dust may form and be breathed in while the sanding machine is being used. Always wear a dust mask when using the machine for sanding.
- WARNING:** The eyes and/or body may be injured if protective clothing or devices are not worn. Always wear safety glasses, protective clothing and a dust mask during any sanding operation.
- WARNING:** During sanding operations, loud noises may occur which may damage hearing after long exposure. Always use acoustic protection during any sanding operation.

- CAUTION: Injury or damage may occur if maintenance and repairs are carried out by unauthorized staff.
- CAUTION: Injury or damage may occur if the machine is used to move other objects or if it is moved on a slope. The machine must be used exclusively for sanding dry wooden floors which are flat or have a maximum slope of 2%. Do not use the machine to sand steps or pieces of furniture. Do not ride the moving machine.
- CAUTION: Damage may be caused to the machine if it is not kept in a dry building when not in use. Store the machine in a dry building.
- CAUTION: Since the machine is heavy, disconnect the motor before moving it
- CAUTION: Serious damage may be caused to the surface being worked if the machine is left running on the spot while the roller is in contact with the surface. In order to avoid damaging the surface, always approach the cutting line delicately. Do not stop while the roller lowers or rises, but always move at a constant speed.

MACHINE SAFETY INSTRUCTIONS

The following information highlights potentially dangerous conditions for the operator and/or machine. Read this manual carefully in order to become familiar with the machine. Learn to know when these conditions may occur. Set all the safety devices on the machine. Take all necessary measures in order to train the staff who will use the machine. Immediately report damage to the machine or incorrect operation.

1. Keep hands and clothing away from rotating parts.
2. Keep hands on the handles when the machine is running.
3. Do not let go of the machine when the motor is running.
4. Do not run the machine with the belt and abrasive belt guards open.
5. Always run the machine with the dust bag in place.
6. Do not remove the dust bag while the motor is running.
7. Always disconnect the power supply cable before starting maintenance operations.
8. The machine must always be carried with care, since each single part in which the machine can be dismantled is extremely heavy
9. Always use the machine in a well-ventilated area.
10. Always handle dust from sanding correctly (see page 3).

INTRODUCTION AND MACHINE CHARACTERISTICS

Abrasive belt dimensions	750x203 mm
Roller width / diameter	200 mm / Ø 150 mm
Roller Speed AT 50 Hz / AT 60 Hz	2400 rpm / 2500 rpm
Motor (A12) EUROPEAN / (A11) USA	230V~ 50 Hz 2.2 kW / 220V~ 60 Hz 2.2 kW
Control lever	operated from the handgrips
Level control	by means of cam on one wheel
Safety motor protection	heat cutout in the case of power failure, the motor does not restart without manual reset
Wheels	Ø 80 mm replaceable
Bearings	lifelong lubricated radial bearings
Wheel pressure adjustment	continuously adjustable
Machine dimensions	960x310x980 mm
Net weight	60.5 kg
Package dimensions	2 packings 680x370x640 mm & 960x430x220 mm
Gross weight	60 + 8.5 kg
Standard equipment	Dust Bag, Electric Plug, Use Keys, Instruction Manual

INSTRUCTIONS FOR ELECTRICAL CONNECTION

- CAUTION:** This machine only works with the voltage and frequency shown on the machine plate. Before connecting the cable to the power supply grid, make sure that the voltage and frequency available are correct.
- DANGER:** Exposing the machine to water or rain leads to a risk of electrocution. Keep the machine in a dry building.
- DANGER:** Incorrect mains connection of the machine leads to a risk of electrocution. In order to prevent possible electric shocks, always use a three-wire electric system connected to an electrical earth. For maximum protection against electric shocks, use a circuit protected with a differential earth fault interrupter.
- DANGER:** Tampering with the earth pin in any way may lead to electrocution. Do not cut, remove or break the earth pin. Do not try to insert a three-pin plug into a socket or connector which does not have three holes. If the plug does not fit the socket, consult an authorized electrician.
- DANGER:** Using the machine with a damaged plug or power supply cable may lead to electrocution. If the cables or plugs are worn or damaged in any way, have them replaced by an electrician or authorized service staff.

CABLES, EXTENSIONS AND PLUGS

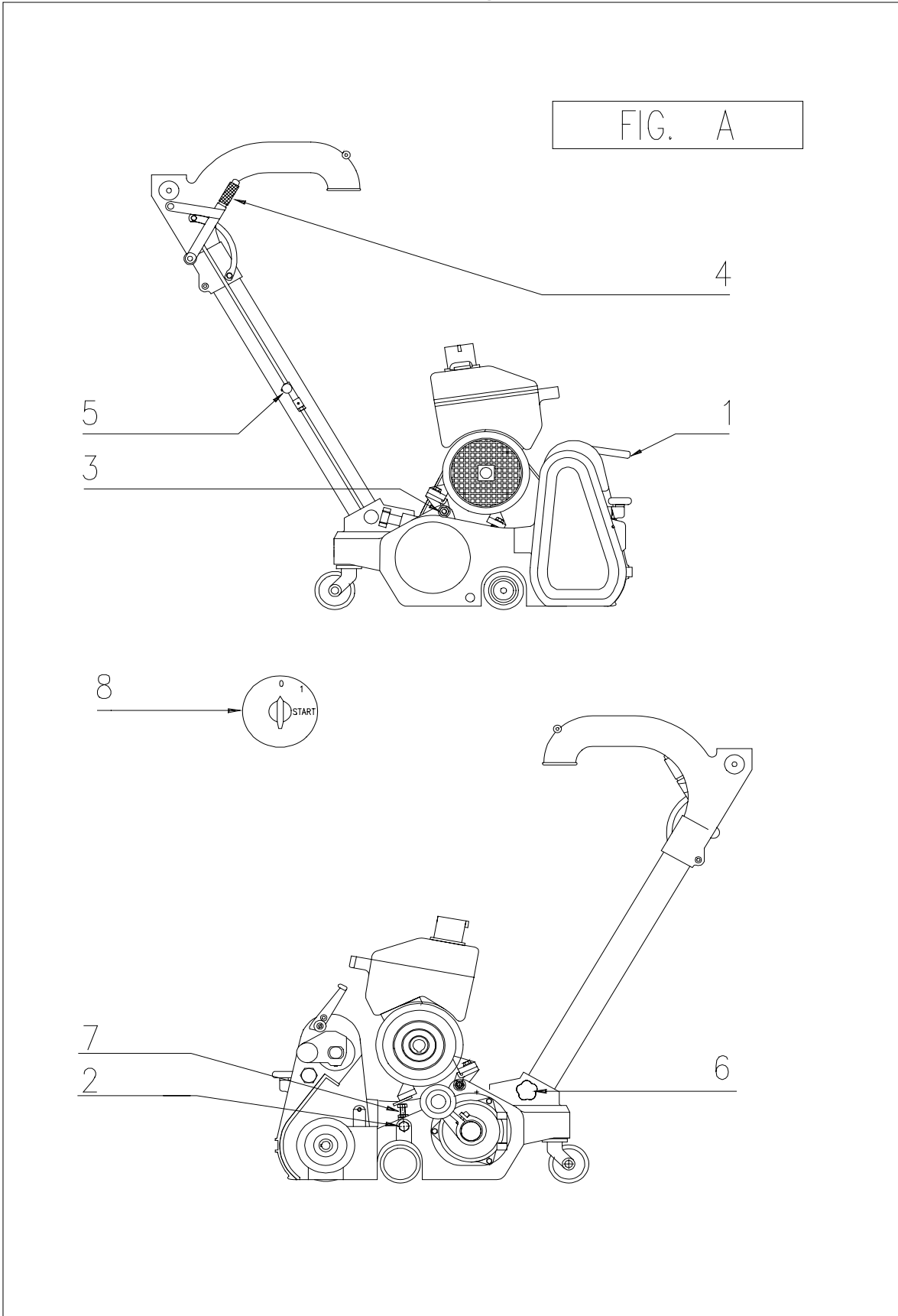
Only use approved three-wire cables, two of which are current-carrying and one earth. The maximum recommended length of the cable is 10 m; for lengths of greater than 10 m use cables with larger cross-section.

- DANGER** If the machine is used with cables of insufficient cross-section and/or excessive length, damage to persons and/or things may occur.

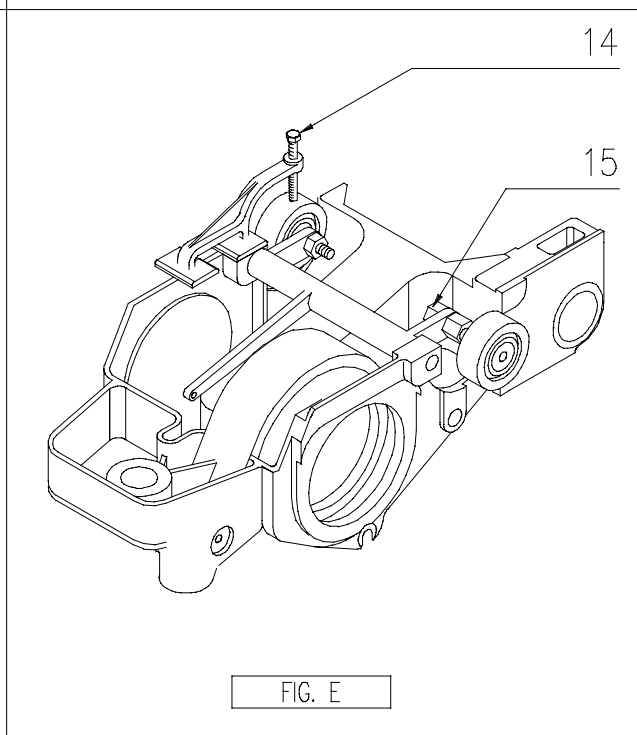
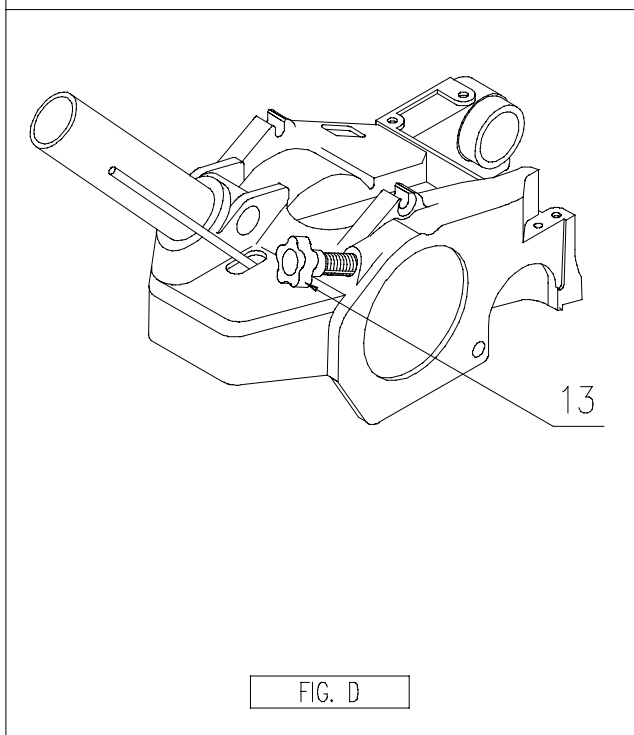
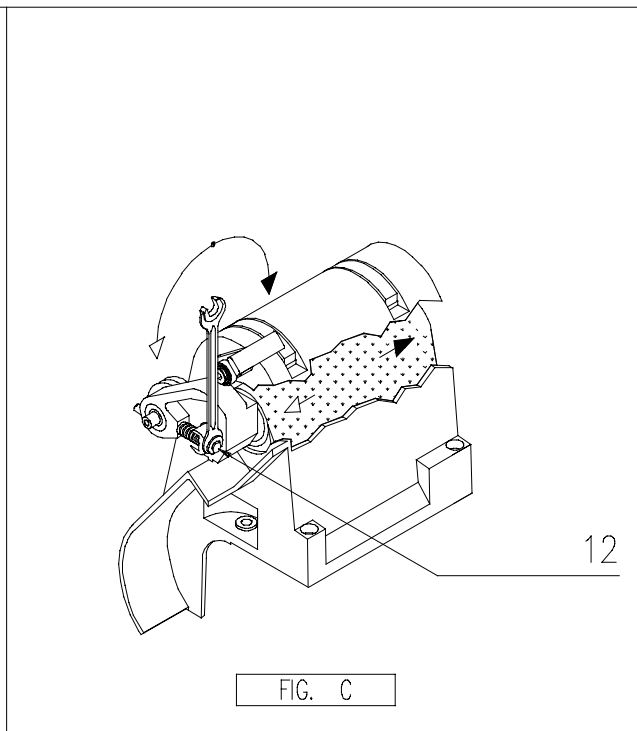
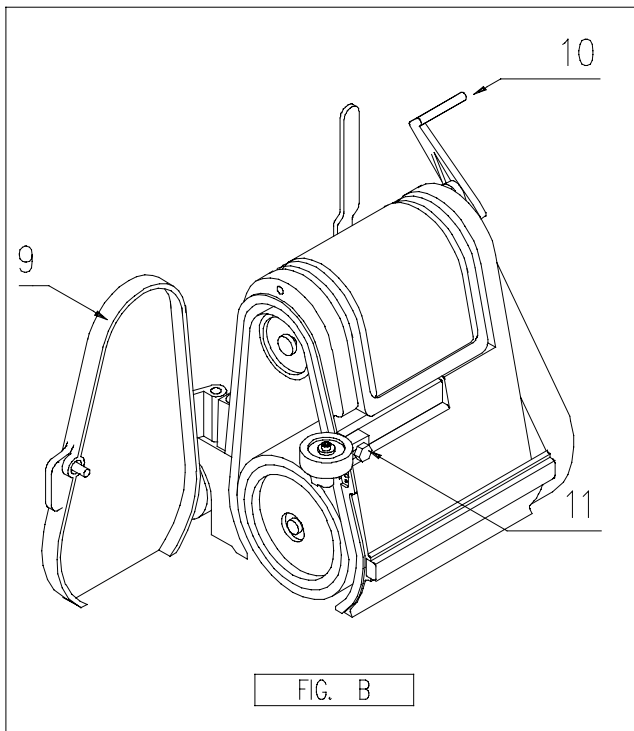
For Europe, the power supply cable must be of the HAR approved type, namely HO5VV-3x2.5 mm², and the plug must be of the 2P+T16A-250V approved type.

For non-European versions, consult an authorized JANSER distributor.

Figures



Figures



CARRYING THE MACHINE

WARNING: Since the machine is heavy, disconnect the motor before moving it. Ask for help in lifting the machine and the motor.

MOVEMENT WITH ONE PERSON

In order to make movement easier, the machine can be dismantled into three parts:

motor

suction tube

base with roller

Proceed as follows:

1. Make sure that the power supply cable is disconnected from the mains and the machine.
2. Open the belt guard after unscrewing the attachment screw.
3. Loosen the belt stretcher using lever 2 (fig. A) and remove the belts.
4. Loosen knob 3 (fig. A) until the socket washers on the motor support shaft come out of their sites on the supports.
5. Remove the motor and take it to the work site.
6. After lowering lever 4 (fig. A), unscrew and extract knurled knob 5 (fig. A).
7. Loosen nut 6 (fig. A), slip the tube off and take it to the work site.
8. Lift the base by taking hold of it at the front and back. Rest the belt guard against the chest and carry it to the work site.

In order to reassemble the machine after moving it, proceed as follows:

1. Open the belt guard.
2. Fit the motor in place and fix it by tightening knob 3 (fig. A).
3. Fit the belts, stretch them and close the belt guard by tightening the respective screw.

CAUTION: Excessive belt tension may cause the ball bearings to wear prematurely.
The roller belt must deflect by 8mm when a load of 30 N is placed in the middle.
The aspirator belt must deflect by 8mm when a load of 18 N is placed in the middle.

4. Fit the suction tube and roller control rod.
5. Lift the roller using lever 4 (fig. A).
6. Connect the power cable to the machine and mains.

MOVEMENT WITH TWO PEOPLE

In order to move the machine with two people, proceed as follows:

1. One operator takes hold of the handle hand-grip.
2. The second person lifts the machine using handle 1 (fig. A).

SETTING THE MACHINE UP

In order to start up the machine, proceed as follows:

1. Familiarize yourself with the machine and read all the danger, warning and caution instructions. Make sure that all operators have read this manual.
2. Place the dust bag on the elbow and tie the cord above the flange on the elbow.
3. Find the power socket. The socket must be compatible with the plug. To avoid danger, the socket must be earthed and protected with a fuse (20 amp).
4. Wind the cable around the pig's tail support. Keep the cable out of the machine's way.
5. Open side guard 9 (fig. B).
6. Lower the tensioning roller by turning lever 10 (fig. B) clockwise.
7. Insert the abrasive belt and allow it to protrude from the side by about 2 centimetres.

WARNING: Only use 750x203 mm abrasive belts.

8. Stretch the belt by turning lever 10 (fig. B) anticlockwise.
9. Put the plug into the socket.
10. Make sure that lever 4 (fig. A) is hooked up and the roller is off the floor.
11. Turn switch lever 8 (fig. A) momentarily from position 0 to the START position, and bring it back to 0
12. Observe the behaviour of the abrasive belt. Follow the "PROCEDURES FOR CENTRING THE ABRASIVE BELT".
13. Close side guard 9 (fig. B).

MACHINE OPERATION

- DANGER:** Sanding wooden floors may lead to an explosive environment. Cigarettes, cigars, pipes, lighters, pilot lights and all other sources of fire may cause an explosion if they are used while sanding. Sources of fire must be completely removed from the work area.
- DANGER:** Poorly ventilated work areas may lead to an explosive environment when certain combustible materials are present in the air, such as, for example, solvents, thinners, alcohols, fuels, some paints, sawdust and other combustible materials. Machines for sanding floors can cause combustible materials and vapours to ignite. Read the manufacturers' instructions on each chemical product used in order to decide whether it is combustible. Keep the work area well ventilated.
- DANGER:** Dust created by sanding may spontaneously ignite and cause injury or damage. Dust from sanding must be dealt with suitably. Always empty the sanding dust into metal containers located outside the building.
- DANGER:** Dust created by sanding may spontaneously ignite and cause injury or damage. Empty the dust bag when it is one-third full. Empty the dust bag each time after finishing with the machine. Never leave the dust bag unattended when it contains sanding dust.
- DANGER:** Knocking against nails while sanding may cause explosion or start a fire. Always sink all nails completely before sanding the surfaces.
1. Make sure that lever 4 (fig. A) is hooked up and the roller is off the floor.
 2. Turn switch lever 8 (fig. A) from position 0 to the START position, hold it there until the motor has reached sufficient rotary speed, then release the switch lever, which automatically returns to work position 1.
- WARNING:** During the winter, with very low temperatures, if the first startup is difficult, remove the abrasive belt, start up the motor and allow it to idle for a few minutes. Then replace the belt and repeat the startup operations described above.
- WARNING:** This machine is fitted with a safety switch. If there is a power failure during the work, the contactor automatically trips and prevents the machine from starting up accidentally when power is restored. In order to start work again, the startup procedure described above must be repeated.

ADJUSTMENT PROCEDURES

PROCEDURE FOR CENTRING THE BELT

When the motor is started up, the belt centres itself automatically.

WARNING: The belt is in the correct position when it protrudes from the sanding roller by about 1.5 mm.

When the belt is first fitted, it may be in the wrong position. In this case, turn screw 12 (fig. C) as follows:

1. By turning the screw in a clockwise direction, the belt moves outwards.
2. By turning the screw in an anticlockwise direction, the belt moves inwards

ADJUSTMENT OF THE SANDING PRESSURE

In order to change the pressure of the roller on the floor, adjust handwheel 13 (fig. D) as follows:

1. By turning the handwheel in a clockwise direction, the roller pressure on the floor decreases.
2. By turning the handwheel in an anticlockwise direction, the roller pressure on the floor increases.

WALL EDGE WHEEL

In order to avoid damaging the skirting or wall while sanding along the wall, a small support with idle wheel (fig. B) has been fitted.

WARNING: The wall edge wheel is correctly positioned when the machine is about 8 mm from the wall with the wheel in contact with it.

Before starting work, position the wheel correctly by unscrewing screw 11 (fig. B), moving the support to the required position and tightening the screw.

WHEEL ADJUSTMENT

(on a plane parallel to the roller axis)

In order to adjust the position of the wheels, proceed as follows:

1. Turn the machine upside down.
2. With the tool provided (14 fig. E), check whether the wheels protrude from the basement by an equal amount. If this is not so:
3. Loosen nut 15 (fig. E).
4. Turn the off-centre pin (fig. E) until the wheel protrudes by the same amount as the other wheel.
5. Tighten nut 15 (fig. E).

ROUTINE MAINTENANCE

In order to keep the machine in good working condition, it is necessary to maintain the following items periodically.

SANDING CHAMBER

Periodically vacuum-clean the sanding chamber of dust in order to prevent interference with correct tensioner operation.

ROLLERS

Periodically check the external surface of the tensioning and sanding rollers. Remove any dirt.

WHEELS

Periodically remove dirt from the machine body and wheels. Dirt can cause ripples on the sanded surface.

DUST BAG

Remove the bag and shake it vigorously to empty out the sanding dust. Turn the bag inside out and wash it in a washing machine in cold water in order to prevent the pores from blocking and its ability to collect dust from decreasing.

BELT TENSION

Periodically check the belt tension. For adjustment procedures, see pg. 10.

BALL BEARINGS

Check the ball bearings periodically for wear or damage according to the following schedule:

Wheels	after the first 2500 hours.
Belt stretching pulley	after the first 2500 hours.
Impeller shaft	after the first 2500 hours.
Tensioning rollers	after the first 2500 hours.
Sanding roller	after the first 5000 hours.
Motor shaft	after the first 5000 hours.

SPARE PARTS

Always use original JANSER spare parts. The guarantee and consequent responsibility are forfeited if non-original JANSER spare parts are used, and if repairs and adjustments are carried out by unauthorized personnel.

PROBLEMS	CAUSES	REMEDIES
Insufficient cut	worn or unsuitable abrasive insufficient roller pressure roller belt tension insufficient worn roller belt	replace abrasive increase roller pressure, see pg. 13 increase belt tension, see pg. 10 replace belt
Insufficient motor speed	insufficient voltage due to: excessive length or unsuitable cable cross-section precarious connections faulty running capacitor faulty motor	use cable of suitable length and cross-section set up suitable connections contact an authorized JANSER distributor contact an authorized JANSER distributor
Grooved work surface	faulty belt dirty or faulty roller surfaces incorrect wheel adjustment	replace the belt clean the outer surface of the tensioner clean, straighten or replace the rubber-coated roller correct their position, see pg. 11
Insufficient dust collection	dust bag over one-third full dust bag dirty or with closed pores intake and or outlet ducts blocked	empty out the contents of the bag shake out the bag and wash it clean the air ducts
The motor does not start	faulty safety switch or contactor faulty startup capacitor insufficient voltage due to precarious connections faulty motor no mains supply voltage	contact an authorized JANSER distributor contact an authorized JANSER distributor contact an authorized JANSER distributor contact an authorized JANSER distributor check the power supply and connections
Burns on the work surface	worn abrasive excessive roller pressure excessively fine abrasive	replace abrasive decrease sanding pressure, see pg. 13 use a coarser abrasive

EC COMPLIANCE DECLARATION

73/23CEE, 89/392/CEE, 91/368/CEE / 89/336/CEE, 92/31/CEE, 93/44/CEE / 93/68/CEE

We

**Janser GmbH
Böblinger Straße 91
71139 Ehningen
GERMANY**

declare under our responsibility that the product

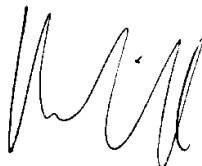
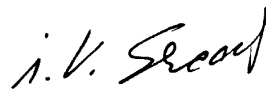
Belt Sander *Leopard*

to which this declaration relates complies with the following standards or other normative document(s):

- ▣ Safety of machinery - Basic concepts, general principles for design
Basic terminology, methodology EN 292 Part 1 –September 1991
- ▣ Safety of machinery - Basic concepts, general principles for design
Technical principles and specification EN 292 Part 2 September 1991
- ▣ Safety of machinery - Electrical equipment of machines
Part 1 : General requirements EN 60204-1 - October 1992
- ▣ Safety of household and electrical appliances - General requirements
EN 60335-1 - June 1988 + Modification 2, 5, 6, A51, A52, A53, A54, A55
- ▣ Limits and methods of measurements of radio disturbance characteristics of electrical motor-
operated and thermal appliances for households and similar purposes, electric tools and similar
electric apparatus - EN 55014 - Edit. 1987 + modification A2 (1990)
- ▣ General emission standard - Residential, commercial and light industry EN 50082-1 Edit. 1992

following the provisions of the Directives:

73/23CEE, 89/392/CEE, 89/336/CEE, 91/368/CEE 92/31/CEE, 93/44/CEE 93/68/CEE

A handwritten signature in black ink, appearing to be 'W. Müller'.**Management**
W. MüllerA handwritten signature in black ink, appearing to be 'i. v. Serediuk'.**Technical Responsible**
H. Serediuk